

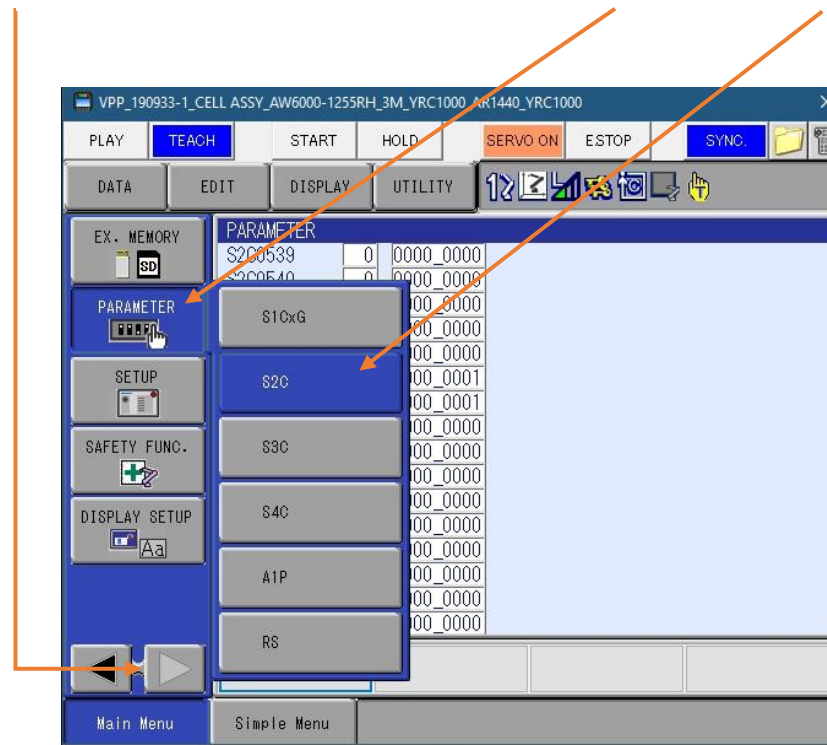
I/O Naming in Job

Introduction

This document will show you how to turn on and use the I/O naming in jobs. This allows you to provide a name for I/O signals and have them show on the I/O instruction line in a job. This is a great aid for operators and programmers to quickly identify what an I/O point is controlling or looking for.

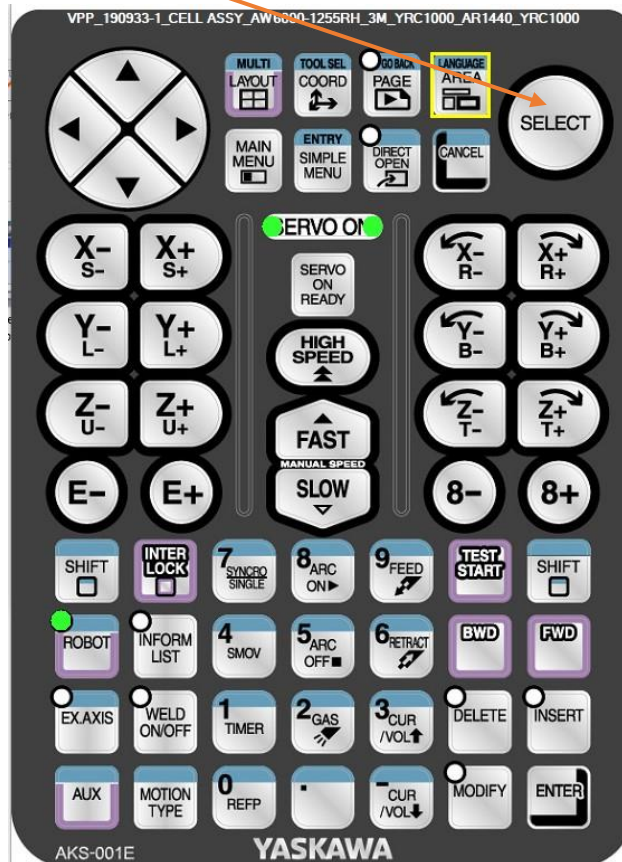
Turning on the Parameter to use I/O Naming

1. Go to the Parameter tab, located on the second screen of the pendant. Click on the Parameter tab. Go to S2C parameters.



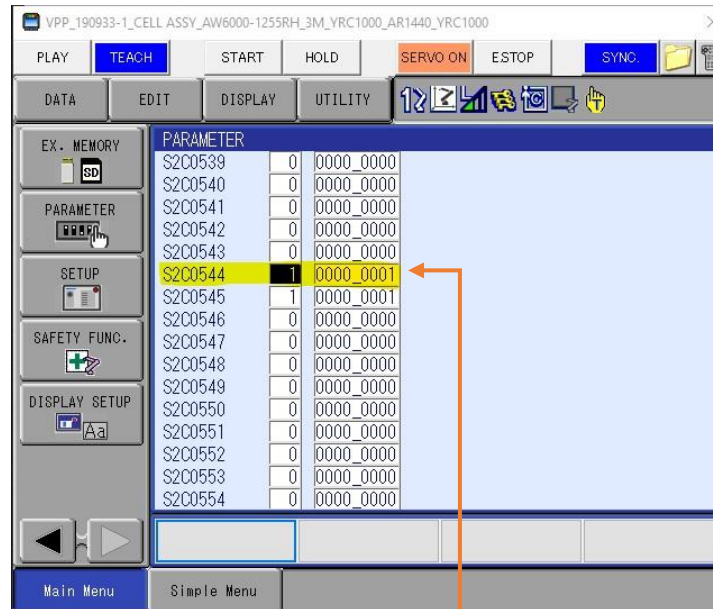
This document captures ideas, experiences, and informal recommendations from the Yaskawa Partner Support team. It is meant to augment – not supersede manuals or documentation from motoman.com. Please contact the Partner Support team at partnersupport@motoman.com for updates or clarification.

2. You can jump to the parameter you want, by pressing select. Then type in the parameter number you wish to go to.



This document captures ideas, experiences, and informal recommendations from the Yaskawa Partner Support team. It is meant to augment – not supersede manuals or documentation from motoman.com. Please contact the Partner Support team at partnersupport@motoman.com for updates or clarification.

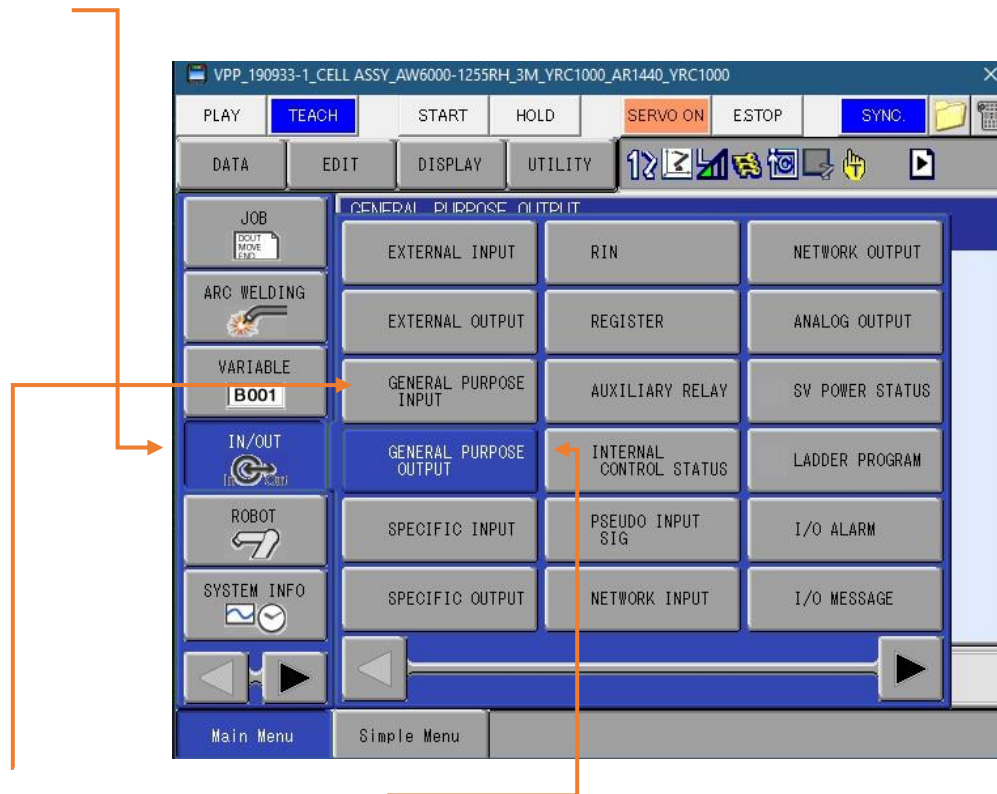
3. In this case, jump to S2C544. Setting the value to 1 will turn on the I/O naming in job function.



4. Change S2C544 to a 1

This document captures ideas, experiences, and informal recommendations from the Yaskawa Partner Support team. It is meant to augment – not supersede manuals or documentation from motoman.com. Please contact the Partner Support team at partnersupport@motoman.com for updates or clarification.

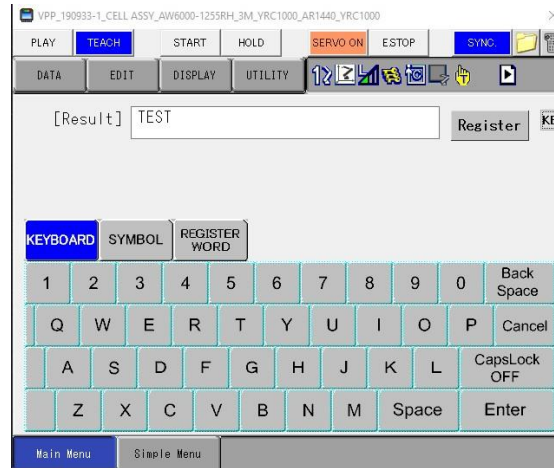
5. To name the I/O, go to the IN/OUT tab.



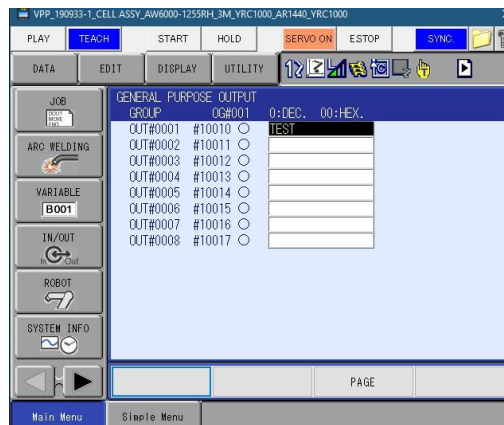
6. Click on either General Purpose Input or General Purpose Output

This document captures ideas, experiences, and informal recommendations from the Yaskawa Partner Support team. It is meant to augment – not supersede manuals or documentation from motoman.com. Please contact the Partner Support team at partnersupport@motoman.com for updates or clarification.

7. Cursor over to the blank section to the right and press select.



8. Enter names for each I/O point you wish to use and identify in your job.



This document captures ideas, experiences, and informal recommendations from the Yaskawa Partner Support team. It is meant to augment – not supersede manuals or documentation from motoman.com. Please contact the Partner Support team at partnersupport@motoman.com for updates or clarification.

9. Now, when you add an I/O instruction for DIN or DOUT, you will have the name shown next to it.

